

**oices**  
קולות ק.ק. עדת ישראל



**Middletown, Connecticut**  
**February 2025 Shevat 5785**



**Trees of Life**  
*Rabbi Nelly Altenburger*

What grows like a tree, gives fruit like a tree, has roots like a tree but is not a tree?

The Torah's answer is: a person!

In a verse in Devarim (Deuteronomy) the Narrator asks rhetorically, "is the fruit-bearing tree a person to make war against you?" The Kabbalists will reread this to mean the fruit-bearing tree is a person. Just as we grow, trees grow; just as we put forth our fruits into the world (our work, children, energy) so do trees; just as we have roots in our families and values, so do trees. And we can add: just as trees need water, we, too—not just the H2O but Torah—as Torah is the waters of our spirituality.

Trees are so important to Judaism that there is an actual day to say if they were planted before this date, they are a year old when that date comes. That day is Tu B'shevat.

*(Rabbi Continued on page 5)*

**WE ARE HERE FOR YOU!**

If you or anyone you know is ill or in need of support, please contact our Bikur Cholim (Compassionate Care) Committee.

Contact Michelle Grossman,  
[rickandmichelle360@gmail.com](mailto:rickandmichelle360@gmail.com);  
Rabbi Nelly, [rabbi@adathisraelct.org](mailto:rabbi@adathisraelct.org);  
or Joanna at the office.

**Do You Want the Good News or the Bad News?**

*Adam Finkelstein*  
*President*



This is a proposition many of us are very familiar with.

Given the choice, I personally always prefer the bad news first. Sometimes though, there's a causation factor that dictates which part comes first, and this is one such time.

Unfortunately, our Religious School Director, Anna Elfenbaum, will be leaving us after the end of this academic year. To say Anna has had a huge impact on our community, young families, and children would be an extreme understatement. I won't try to articulate the totality of how much she has meant to us, and how much we will miss her, just yet, but there will be lots more on that in the coming months.

Her departure is, of course, the bad news.

The good news is that we are hoping to turn the challenge of finding a new religious school director into an opportunity to create a more robust position that could ultimately benefit our entire community.

For years now, the board has discussed and contemplated the potential of adding a type of programming director - a person whose primary objective would be to spearhead the offerings, both secular and non-secular, that we have for our congregants and their families in addition to our traditional services.

While there has never been much disagreement about

*(President Continued on page 3)*



# THE BREAKFAST BUNCH COMMUNITY WITH A SCHMEAR!

**MONDAY, FEBRUARY 3RD**

**UPCOMING DATE:  
MONDAY, MARCH 3RD**

Following morning minyan join us for breakfast at Perk on Main, Middletown  
Please note: while the great conversation is free, participants are responsible for what they order.

**[WWW.ADATHISRAELCT.ORG](http://WWW.ADATHISRAELCT.ORG)**

(President Continued from page 1)

whether we could benefit from such a person, there wasn't always consensus on whether or not we could afford to add another full-time position from a financial perspective.

Now we believe we can, by merging these two positions together.

I'm delighted to share that Adatah Israel is currently looking for a new Director of Religious School and Community Engagement. This is a full-time position that focuses on the vital synergy between our school and young families, as well as the necessity of increased outreach, both internally and externally, in order to drive membership and secular programming participation.

A special thank you to the committee of Sandra Beckman, Carly Norman, Melissa Olczak, Sherry Aiudi, and Ethan Warner-Crane who worked so efficiently to create and post the job description and are now spearheading the hiring process.

How can you help?

If you know anyone who might be interested, please connect them with any of those committee members. The posting can be found on JewishJobs.com and if you're comfortable sharing it within your network or on your social media, that would be greatly appreciated as well.



## Beat Feb-Blue-Ary With Books

A lot of reading always gets done during the winter months as the cold weather keeps one inside and the daylight hours are so short. There are so many books out there to read! Find out about a few new ones this month to chase away the winter blues!

Many thanks to Sandra Beckman for leading the discussion on January 14th of The Last Rose of Shanghai by Weina Dai Randel. We learned so much about a different culture and a moment in history seen through the lens of a young, Chinese heiress and a penniless Jewish refugee. Thanks to all who participated in the discussion.

The book selection for the February 25th meeting is The Postcard by Anne Berest. This is a family drama, a tale of mothers and daughters and a look at twentieth-century Parisian intellectual and artistic life. What happens when an anonymous postcard is delivered to the Berest family

home? Years after the postcard is delivered, the heroine of this novel is moved to discover who sent it and why. Come join us and find out the story behind the postcard!

The Book Club meetings are held at The Nester Center at 7 p.m. as well as via Zoom. We use a hybrid model so that more people can participate.

Meeting ID: 886 4652 0065 Passcode: 196174

Happy Reading!

ROBERTA and HOLLY

Roberta Levine Glass, [rjlevine610@gmail.com](mailto:rjlevine610@gmail.com),  
302-593-7581 (cell)

Holly Simon, [hfpsimon@icloud.com](mailto:hfpsimon@icloud.com), 860-395-8989



## Phishing Awareness Avoid Taking the Bait

Every month or so it seems, scammers send out emails pretending to be from Rabbi Nelly or a member of the Board. Below are some tips on how to avoid getting snagged by one of these phishing expeditions.

\*Common warning signs of phishing include:

- Unfamiliar greeting or tone
- Unsolicited messages
- Grammar and spelling errors
- Sense of urgency
- Suspicious links or attachments
- Requests for personal information
- Inconsistencies in email addresses, links, etc.
- Unusual requests
- Alerts that you've won something

Please remember: **No one from Adatah Israel will ever ask you for personal information or financial assistance via an email.** If you have *any* question, do not respond to the email. Contact the person it claims to be from via a trusted method. DO NOT use any email, website, or phone number included in the suspicious message. If it is spam, please report it to your email provider.

\*<https://us.norton.com/blog/how-to/how-to-protect-against-phishing>

Kolot Issue	Article Due Date
March	2/10
April	3/3
May	4/7
June (Summer)	5/5



# Early Risers Minyan



**February 5th \* 7:00am**  
**Kiddush Breakfast Following Service**

(Rabbi Continued from page 1)

Initially it was used to determine from which trees one would be permitted to eat, since the fruits from trees that are less than three years old are to be left alone—they are called ORLAH.

Tu B'shevat stands for the 15th day of the Hebrew month of Shevat, and our sources call it “the new year for the trees” —*Rosh Hashanah Lallanot*. It really begins as a bureaucratic date, but just as our Rosh Hashanah, Tu B'shevat is a late bloomer; and it will bloom after the 16th century in full force.

It is Kabbalah that is going to make a connection between the real, tangible trees outside with the Torah being called “Tree of Life”. And they will intersect that combination with the Kabbalistic Tree of Life, that has the ten *sefirot*, the ten channels of energy flow, which I am sure you have seen around.

Inside this system, the Kabbalists will point out something absolutely precious: that we, human beings, can be seen as trees, as well, and we can use that soul map to become better people.

So for the Kabbalists Tu B'shevat becomes a powerful holiday because it intersects and combines all these things: humans, physical world, spiritual world and the energy channels flowing from the Divine to the world and to us. Today in our fancy-shmancy words we would call this a holistic view.

And what will the Kabbalists then do? They will create what is called a seder, just like the seder we have for Passover. The Kabbalists believed that by eating certain fruits on Tu B'shevat, in a certain order, with full intention and proper blessings, one could increase the flow from Heaven to Earth and thus harvest more physical abundance while bearing more spiritual fruit.

In many communities nowadays, Tu B'shevat has become the Jewish Arbor Day. But this is only possible because of the holiday's re-creation by the Kabbalists, which stresses an ecological view of the world, and of maybe surprisingly, Zionism. As we reconnect with the land, those ideals go back to being put into practice – respecting the soil, living from nature in the land. And, I believe, they put into practice this view that we are connected to the land and its fate.

This view – how we are stewards of the earth, how we are supposed to care for it, how our existence in the earth is dependent and interconnected with the welfare of the Earth, is found in fairly early sources of Rabbinic Judaism, already in the second century and, quite literally, grows from there.

Our Tu B'shevat seder will be on February 12th! All are welcome.

Have a beautiful, fruitful, joyful Tu B'shevat.

## Updated Chevra Kadisha Rules & Regs

The Chevra Kadisha Rules & Regulations were recently updated to incorporate a clear statement that cremains may not be buried in either section of the Adath Israel Cemetery.

Anyone wishing to be buried in our cemetery must undergo some form of Taharah, the ritual cleansing of the body before burial. Taharah cannot be performed on a deceased who will be cremated (even prior to cremation). Therefore, cremains cannot be buried in the cemetery.

Anyone wishing an updated copy of the rules & regs can contact the office.

## CELEBRATE JEWISH LIFE THROUGH PRAYER

All services are in-person & via Zoom

### **Morning Minyan**

Monday - Friday, 8:00 AM

Monthly Early Risers Minyan, 7:00 AM

Sunday, 9:00 AM

### Zoom Info

Meeting ID: 863 5646 9422

Passcode: 679552

### **Shabbat Services**

Friday, 7:00 PM

Monthly Pray-Eat-Sing Services, 6:00 PM

Saturday, 9:30 AM

### Zoom Info

Meeting ID: 815 6727 3870

Passcode: 474612

All prayer services at Adath Israel are public events, open to the community as a whole. Members, guests, and other religious seekers who desire the warmth of Jewish prayer and the fellowship of being together are always welcome.



# Tu B'shevat Seder & Dinner Discussion

**February 12th  
5:30pm**

**Free, RSVP  
by February 10th**

 **Adath Israel**  
Celebrate Jewish Life



Jo-Ann & Michael Price  
Loretta & Julius Rubin



Hinda Niemeyer  
Felix Hibino  
Nancy Shapiro  
Cynthia Kaplan  
Parker Cohen-Glyck  
Nathan Aiudi  
Phyllis Frydenberg  
Sara Paley  
Patty Netherland  
Andrea Fassler  
Barbara Weiss  
Christine Baskin  
Susan Schmeiser  
Eliot Meadow  
Henry Winkler  
Dewey Deeton  
Harriet Deeton  
Juliana Simon  
Nathan Shapiro-Rosado  
Julie Weiss  
Allen Caplan  
Linda Caplan  
Mark Paley  
Tod Olczak  
Naomi Kamins  
Marion Irizarry  
Loretta Rubin  
Robert Massicott

Did we leave someone off the list?  
Please call the office, and let us make it right.

## Office Hours

Monday: 8 a.m.-1:30 p.m.

Tuesday: 8 a.m.-1:30 p.m.

Wednesday: 9 a.m.-5:30 p.m.

Thursday: 8 a.m.-1:30 p.m.

Friday: 8 a.m.-Noon

The office is closed weekends  
and legal and Jewish holidays.

### HONOR THOSE SPECIAL PERSONS IN YOUR LIFE WITH A PLAQUE FOR THE "SIMCHA" MENORAH

Whether it celebrates a B'nei Mitzvah,  
Birth of a Child or Grandchild, Wedding,  
"Special" Birthday, special event/honor, etc.  
share your joy with our synagogue community

**FOREVER.**

**Only \$136.00 – A gift that endures**

Contact the office to order.

### Famous Jews with February Birthdays

- 1 Jascha Heifetz (1901)
- 3 Stan Getz (1927)
- 4 Eric Garcetti (1971)
- 9 Joseph Stiglitz (1943)
- 10 Josh Rosen (1997)
- 12 Anna Pavlova (1881)
- 13 Eleanor Farjeon (1881)
- 22 Rashi (1040), Moses Isserles (1520)
- 23 Debbie Friedman (1951)
- 28 Frank Gehry (1929)





# PRAY EAT SING

**FEBRUARY 14TH \* 6:00PM**  
**RSVP BY FEBRUARY 7TH**

**THERE WILL BE A SPECIAL CHOCOLATE FOUNTAIN FOR DESSERT!**



**ADATH ISRAEL DEDICATED FUNDS**

**ADATH ISRAEL SCHOLARSHIP FUND** (SOPHIE & JULIUS BARKER, EVELYN & ABRAHAM GROSSMAN, SARAH ZIETZ PIERSON, RABBI ALBERT & ROSALYN TROY, SYLVIA GROSS WASSERMAN, MAX CHEIKIN, BERNIE SEIDON, AND JEAN STERN ARON SCHOLARSHIPS)

*Provides scholarships to children of Adath Israel members attending an accredited college, university or school of higher learning*  
Shelley & Michael Barker

**DR. ARTHUR & GLADYS WEISS SCHOLARSHIP FUND**

*Provides scholarships to children of Adath Israel members attending Jewish camp, Jewish content special programs, and trips to Israel*

**BEIT-PALEY FUND**

*Supports Torah repair*

**CHEVRA KADISHA**

*Supports maintenance and enhancement of the cemetery*

IN MEMORY OF

Anne Willis by Paulette Gewirtz

**ARTHUR & EDYTHE DIRECTOR FAMILY FUND**

*Supports music in the ritual, educational, and cultural gatherings at Adath Israel*

**ETERNAL LIGHT FUND**

*Supports the general operation of Adath Israel*

**HOWARD FELDMAN BEAUTIFICATION FUND**

*Supports the beautification of our synagogue building and grounds and the Nester Center*

**LYNN BENNETT RELIGIOUS SCHOOL CAPITAL CAMPAIGN**

*Supports the upgrade of our religious school*

Carolann Schwartz

Phyllis Wang

**MAXINE THUMIM CAMP SCHOLARSHIP FUND**

*Provides scholarships to children of Adath Israel members attending Jewish camp or travelling to Israel*

**MICHAEL FASSLER FUND**

*Supports early childhood education at Adath Israel*

**MUSEUM FUND**

*Supports purchases and maintenance of Adath Israel's museum*

**NATHAN OLSHIN SCHOLAR-IN-RESIDENCE-FUND**

*Supports annual scholar-in-residence program*

**RABBI'S DISCRETIONARY FUND**

*Allows the rabbi to support individuals and causes in our community anonymously*

Susan Tritter

IN HONOR OF

His bar mitzvah anniversary by Aaron Thiela

IN MEMORY OF

Anne Willis by Louise Lief

**SANFORD BEIT MINYAN FUND**

*Supports the creation and building of community over Kiddush*

**SYNAGOGUE FUND**

*Supports the general operation of Adath Israel*

Katya & Joel Gerwein

Carrie Nemeth

Andrea Apter & Harry Chen

Roger Beit

Mark Lapidus

IN MEMORY OF

Anne Willis by

Ruth & Mike Sigal

Rachelle & Edwin Maltzman

**YAHARZEIT FUND**

*Supports the general operation of Adath Israel*

Bruin Lipman by Sarah Greenblatt

I Albert Lipman by Sarah Greenblatt

Herman Sheftel by Barry & Cyndi Sheftel

Arthur Shulman by Dave Shulman

David Glaz by Joseph Glaz

Robert Rovinsky by Richard P. Robbins

Judith Mittelman by Sharon Murphy

Martin Fields by Harriet Deeton

Sherman Tonkonow by Barbara Kendzior

Jerry Kosofsky by David Kosofsky

Anna Weiss by James H. Weiss

Barbara Shapiro by Ernest Shapiro

Emanuel Saul Dubin by Joseph Dubin & Family

Stephen Sheftel by Barry & Cyndi Sheftel

David Axelrod by Katrina & Robert Axelrod

Bruce Weiss by

Alice "Ivy" Weiss

Barbara & Steven Weiss

Joseph Ravitch by Lee Broder

Bernard Schwarz by Peter Schwarz

Bernice Bonchi by Susan Bonchi

Abe Wiener by Cheryl Wiener

David L. Schwartz by Nancy L. Schwartz

Sylvia Mellman by Barbara & Steven Weiss

Ruth Maron by Ellen Gross

Harry Edelberg by Paul Edelberg

Frances Dubrow by Naomi Cohen

David Beckman by Sandra & Paul Beckman

Adath Israel  
Celebrate Jewish Life

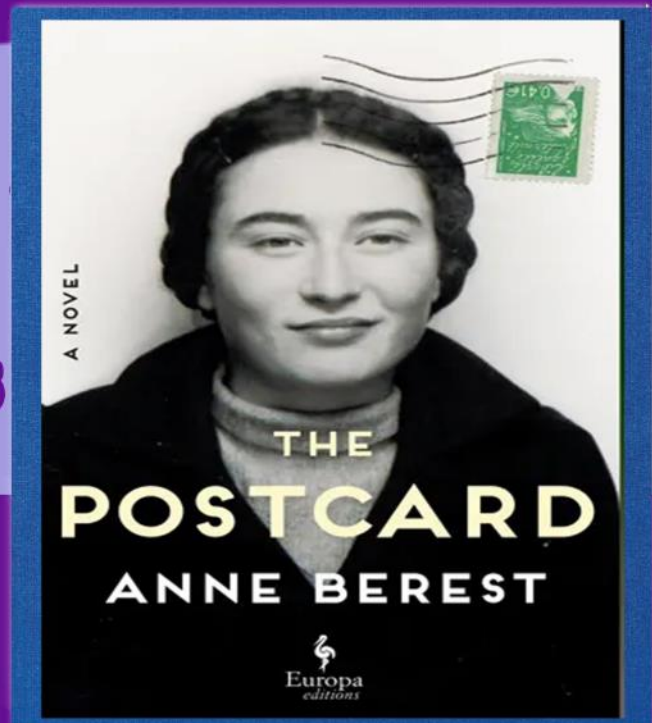
# Book Club

February 25th  
7:00pm

ZOOM & In-Person  
at the Nester Center

## "The Postcard" by Anne Berest

Zoom Info  
Meeting ID: 886 4652 0065  
Passcode: 196174



Adath Israel Book Club  
is free and open to  
anyone who desires  
great discussions about  
fascinating books  
on Jewish topics

For more information, please contact  
Roberta Glass: [rjlevine610@gmail.com](mailto:rjlevine610@gmail.com)  
302-593-7581

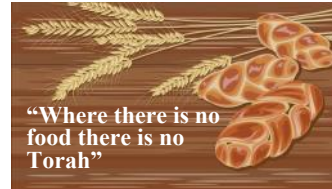
or Holly Simon: [hfpsimon@icloud.com](mailto:hfpsimon@icloud.com)  
860-395-8989



*(Funds Continued from page 9)*

Libby Stoller by Sandra & Paul Beckman  
 Edith Savitsky by Robin & Marty Levine  
 Morris T. Levine by Robin & Marty Levine  
 Morris Sheftel by Barry Sheftel  
 Irwin Zagoren by Minna Gregerman  
 Ida Paul by Debby Paul Fuller  
 Ruth Edelberg by June Saltzberg  
 Helen Fields by Harriet Fein-Deeton  
 Edith Barker by Michael Barker  
 Seymour Ronner by Carolann Schwartz  
 Dorothy Ronner by Carolann Schwartz  
 Esther Ronner by Carolann Schwartz  
 Esther Pinkus by Marcia Wrubel  
 Jack Pinkus by Marcia Wrubel  
 Max Seligman by Myrna Friedman  
 Jerry Kosofsky by Martha Weisberg  
 Isaac Shapiro by Ernest Shapiro

**Returning bottles:** Eileen & Mike Daling  
**Helping whenever asked:** Eileen Daling, Richard Kamins, Phil Saxe,  
**Donating 2 Etz Chaim in memory of his Temple B'nai Abraham classmate, Donna Ilene Hyler z"l:** Berry D. Friedman



**Sponsoring Pray-Eat-Sing**  
 Laurie & Rabbi Marshal Press  
 Richard & Naomi Kamins

IN MEMORY OF  
 Myron Poliner by Josephine Trotta Poliner

**Sponsoring an Oneg or Kiddush**

IN MEMORY OF  
 Edward Shemkovitz by Saul & Anne Shemkovitz  
 Lejzor Telis by Sherman Telis  
 Sharon Engle by Jean Lawrence  
 William Z. Good by Michael Good  
 David Nemeth by Jean & Marc Nemeth

**SPEEDY RECOVERY**

We'd like to wish a "Refua Shleima" to the following: Katrina Axelrod, Phyllis Frydenberg, Paula Goldstein, Rabbi Marshal Press, Stan Sadinsky, David Schwarz, Lily Shapiro and Stephen Shapiro.



**5785 Annual Giving Campaign**



We are incredibly grateful to our members and friends who have participated this year's Annual Giving Appeal. Their support promotes the vitality of Adath Israel, allowing us to improve our facilities and enhance our cultural, educational, and spiritual offerings.

Thank you, thank you, thank you:  
 Matthew Feldman and Theanne Chivily  
 Jeffrey S. & Bobette Reed Kahn

**IT'S NEWS**

**MAZAL TOV!!!**



Joshua Young, will be undertaking a significant journey to Israel for the next six months. He'll begin with participation in a Jewish Leadership Exchange solidarity mission, followed by intensive study at Ohr Somayach Yeshiva in Jerusalem. We are incredibly proud of his commitment to both social action and his Jewish faith.

**TODAH RABAH**

**Acts of Kindness**

**Meals & shopping:** Harriet, Marcey, and Aaron Thiela, and Phil Saxe

**Picking up food at the Crown:** Fred Zierler

**Proofreading:** Naomi Kamins, Phil Saxe

**Helping with mailings:** Anita Hennessey

**Taking care of our eNews and blasts:** Eileen Daling

**Washing linens from the kitchen:** Joanna Schnurman



**MAY GOD GRANT COMFORT**

WITH DEEPEST SYMPATHIES TO Yakov Filler on the recent passing of his brother, Yitzchak Filler z"l.

**May the bereaved find comfort in our community's support.**

**Member Resources**

- The following resources are available to members:
- 2024-25 Member Directory
  - 2024-25 Life of the Congregation & Synagogue Leadership
  - 2024 By-Laws of the Congregation
  - 2024 Chevra Kadisha Rules & Regulations
- Please contact the office to receive your copy.

# The World Zionist Congress Election Is Coming!

As you may be aware, the voting period to elect the members of the World Zionist Congress will begin on March 10 and run through May 4.

Adath Israel supports the **Mercaz Olami** slate of candidates representing the global Conservative/Masorti movement.

**Voting for Mercaz is critical** to protect liberal and pluralistic Judaism in Israel and around the world from the takeover of the WZC by ultra-Orthodox parties, with important issues including access to the Kotel, conversion recognition, environmental concerns, and many more hanging in the balance.

This is because the WZC controls billions of dollars in funding and sets the priorities for four national institutions in Israel:

The World Zionist Organization - The umbrella organization of the Zionist movement. It spends millions of dollars to promote Zionist education around the world and since October 7 has been a leader in supporting the families of hostages.

KKL [Keren Kayemet L'Yisrael] or JNF [Jewish National Fund] - The national land purchasing fund of Israel focusing on development and environmental preservation. (This is not the same US-based JNF that plants trees in Israel.)

The Jewish Agency - The organization that facilitates making aliyah and is the voice of the Diaspora - giving it a major voice in the ongoing discussion in Israel about "who is a Jew". The JA is also a major supporter of Ramah camps, USY, and other important connections between Israel, the Conservative Judaism movement and the rest of the world.

Keren HaYesod - The primary fundraising organization of world Jewry, helping developed and emerging Jewish communities worldwide.

Voting will be open to all Jews over the age of 18 outside Israel and will only require a few clicks on your phone and a nominal \$5 administration fee.

You'll be hearing more about this important election in the coming weeks and months ahead.

When the voting opens in March, we want Adath Israel to show its community strength and be a leader among conservative shuls around the world!

To sign up for a reminder go to <https://www.mercazusa.org/votemercaz2025/> or click this link.

To know more about why the World Zionist Congress has been a fundamental voice in Israel watch this video by the American Zionist Movement (AZM): <https://www.youtube.com/watch?v=vLI9maQIMGQ>

If you have questions or would like to get involved we would love that! Please reach out to Rabbi Nelly (rabbi@adathisraelct.org) or our shul's election captain Paula Goldstein (pdsdds@aol.com).



# 2025 Pride Committee forming now!

**Already amazing, we  
want our booth &  
activities to be bigger  
& better than ever.  
Contact Joanna in the  
office to be part of  
this great event.**

## **ADATH ISRAEL ACADEMIC SCHOLARSHIPS**

The Scholarship Committee of Adath Israel is pleased to announce that the Application Forms and Rules and Regulation Guidelines for the Annual Adath Israel Post Secondary School Scholarships are available at the end of this issue of *Kolot* or from the synagogue office.

Students who are seniors in high school through graduate school, and whose family meets the membership requirements are encouraged to apply.

All questions concerning the application process should be directed to **Fred Zierler**, Committee Chair at (203) 631-9567 or via email, [fzierler@gmail.com](mailto:fzierler@gmail.com).

Completed applications should be returned to the synagogue office by May 9, 2025.

## **ADATH ISRAEL EMERGENCY CANCELATION & CLOSING PROCEDURES**

**RELIGIOUS SCHOOL :  
THE PRINCIPAL WILL CONTACT  
STAFF & STUDENTS' FAMILIES  
DIRECTLY.**

**ALL OTHER CANCELATIONS  
& CLOSINGS:  
CHECK TV CHANNEL WFSB  
(EYEWITNESS 3) OR  
[WWW.WFSB.COM](http://WWW.WFSB.COM).**

St Vincent de Paul feeds those in need in Middletown Monday-Saturday, but they rely on community groups to prepare and serve on Sundays.

### ***Cooking for a Cause*** *Tikun Olam a spoonful at a time*

Adath Israel would like to do its part one Sunday over the summer, but:

**We can't do it without you.**

We need sponsors, shoppers, cooks & servers.

Please contact the office if you can help.

Adults Only  
**MEGILLAH READING**

**Join Us for an evening of Fun, Food and Friends**  
**7:30 pm Megillah Reading**

Beverages, hot & cold hors d'oeuvres. Costumes strongly encouraged  
 Suggest donation \$18 per person

A portion of each donation will go toward the mitzvah of matanot  
 l'evyonim, giving support to those who need help

**March 13th**  
**in the**  
**Nester Center**  
 RSVP: March 7th



 Adath Israel  
*Celebrate Jewish Life*

For more info please contact synagogue at 860-346-4709 or [office@adathisraelct.org](mailto:office@adathisraelct.org)



## Chanukkah Noon Years Eve Celebration Fun!

Our annual community Chanukkah celebration looked a little different this year. Because the Chanukkah season fell a bit later than usual this year (although it's always on the 25th of Kislev on my calendar), this meant a change from years past. In order to take advantage of the overlap between the secular New Year and Chanukkah, this year the synagogue's social activity committee hosted a Noon Year's Eve Chanukkah Celebration. The party was a blast with a latke bar, holiday music, games, and a countdown to the Giant Dreidel Drop at noon. We also enjoyed the large number of festive Chanukkah attire. Perhaps next year's party will include a Chanukkah Sweater competition. The party was very well attended with approximately 50 people helping us ring in the new year and celebrate the miracle of lights all at the same time. Particularly nice was the large number of children and families in attendance. We would like to give a special thanks to the Altenburger children for their help with the decorations, Adam Finkelstein and Barbara Sequenzia for their help with serving, Barbara Fenig for making the delicious latkes, and everyone who helped make it such a wonderful event, either by volunteering or attending. We look forward to seeing you all at next year's Chanukkah Celebration.

-Ethan Warner

## Jewish Camp/Israel Trip Scholarships

The Congregation is blessed with two scholarship funds which provide support for children of members in good standing wishing to send their children to Jewish summer camps or to experience Israel.

**Applications for the Maxine Thumim Camp Scholarship and the Dr. Arthur & Gladys Weiss Scholarship are at the end of this issue of *Kolot* and are available from the Synagogue office.**

## Speed Bumps



Traffic between the Town Green and Broad St. has always had access through our lot, but some drivers have been coming through at unsafe speeds over the past few years. To address this, two rows of speed bumps will be installed between the Synagogue and the Nester Center. This is scheduled for March when warmer temperatures arrive.



## Gifts of Etz Hayim

It has come to the attention of the Ritual Committee that the Synagogue needs to replace and replenish our supply of Etz Hayim: Torah and Commentary, the books we use every Shabbat Morning when we read Torah. More than half of our books are in very poor condition (ripped bindings, loose, torn, or missing pages), rendering them nearly useless. In fact, we no longer have enough for our services that draw a larger congregation, e.g. B'Nei Mitzvot, holiday, and festival services.

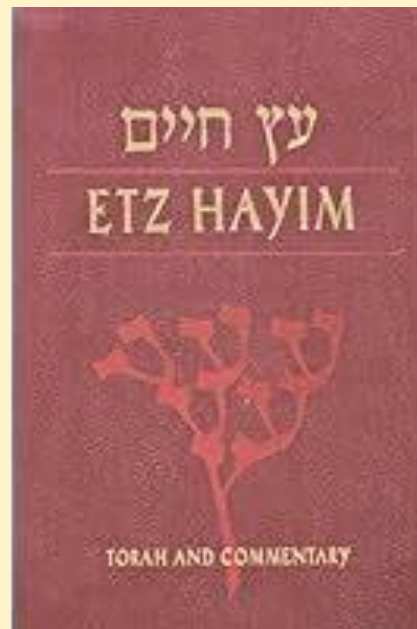
If you have been considering giving a gift to honor a loved one or to mark a special occasion (birthday, anniversary, a recent honor, etc.), please consider donating to the Adath Israel Book Fund. A new copy costs us \$90. For that amount, we will put a nameplate inside indicating the donor(s), the honoree(s), and the

reason for the contribution. Of course, any amount will be gratefully appreciated. Please be sure to note that it's a targeted donation for the Book Fund.

We are grateful for your generosity.

The Ritual Committee,

Leah Adler and  
Richard Kamins  
(co-Chairs)





**Megillah Reading  
and  
PURIM  
CARNIVAL**

 **FAMILY ACTIVITIES  
MARCH 16TH**

**Megillah Reading starts at 9 am  
in the Nester Center  
Purim Carnival to follow in the  
large social hall.  
Join us for games, food and fun.**

**FOR MORE INFO CONTACT THE OFFICE AT  
860-346-4709 OR OFFICE@ADATHISRAELCT.ORG**

[WWW.ADATHISRAELCT.ORG](http://WWW.ADATHISRAELCT.ORG)



# It's time to gather again! Women's Seder

Featuring Michelle Citrin and our  
community female rabbis and cantors



**Thursday, March 27, 2025 | 6:00pm**

The Emanuel Synagogue | 160 Mohegan Dr, West Hartford

\$72/person, \$36 Bat Mitzvah through college

\$180 Patron

\$1800 Miriam Sponsor (table of 10)

**Sponsorships and Donations:**

Elana MacGilpin, 860-231-6317, emacgilpin@mandelljcc.org

David Jacobs, 860-231-6313, djacobs@mandelljcc.org

**Tickets & Questions:**

Leslie Sax, 860-231-6455, lsax@mandelljcc.org

[www.mandelljcc.org/tix](http://www.mandelljcc.org/tix)

Celebrate Passover together in a meaningful and empowering atmosphere.

- Singing, dancing and storytelling
- Festive Passover rituals
- Take-aways to enhance your own Seders
- Fun with friends, sisters, mothers and grandmothers

Don't miss this unique opportunity to connect and uplift our community!



MANDELL JCC  
Greater Hartford





# february 2025

## shevat

sunday	monday	tuesday	wednesday	thursday	friday	saturday
					*Candle Lighting Times for Middletown, CT	1 9:30 a.m. Shabbat Morning Services  <i>Bo</i> 3 shevat
2 9 a.m. Minyan 9 a.m. Religious School 10:30 am Mazel Tots  <b>4 shevat</b>	3 8 a.m. Minyan Breakfast Bunch following services 7 p.m. Board of Directors Mtg  <b>5 shevat</b>	4 8 a.m. Minyan 11 a.m. Mah Jongg 12:30 p.m. Mah Jongg 7 p.m. Al Anon & Alateen  <b>6 shevat</b>	5 7 a.m. Early Risers Minyan 10:30 a.m. Torah Study w/ Rabbi Nelly, Zoom 4 p.m. Religious School  <b>7 shevat</b>	6 8 a.m. Minyan 6 p.m. Torah Study  <b>8 shevat</b>	7 <b>Pray-Eat-Sing RSVP Deadline</b> 8 a.m. Minyan 7 p.m. Shabbat Evening Services  *4:56 p.m. <b>9 shevat</b>	8 9:30 a.m. Shabbat Morning Services  <i>Beshelach</i> <b>Shabbat Shirah</b> 10 shevat
9 9 a.m. Minyan 9 a.m. Religious School 10:30 a.m. Mazel Tots  <b>11 shevat</b>	10 <b>March Kolot Articles Due</b> 8 a.m. Minyan  <b>12 shevat</b>	11 8 a.m. Minyan 11 a.m. Mah Jongg 12:30 p.m. Mah Jongg 7 p.m. Al Anon & Alateen  <b>13 shevat</b>	12 8 a.m. Express Minyan 10:30 a.m. Torah Study w/ Rabbi Nelly, Zoom 4 p.m. Religious School 5:30 Tu B'shevat Dinner  <b>14 shevat</b>	13 8 a.m. Minyan 6 p.m. Torah Study  <b>Tu B'shevat</b> 15 shevat	14 8 a.m. Minyan 6 p.m. Pray-Eat-Sing Shabbat Evening Services & Dinner  *5:05 p.m. <b>16 shevat</b>	15 9:30 a.m. Shabbat Morning Services  <i>Yitro</i> 17 shevat
16 <b>No Religious School or Mazel Tots</b> 9 a.m. Minyan  <b>18 shevat</b>	17 <b>Office Closed</b> 8 a.m. Minyan  Presidents Day <b>19 shevat</b>	18 8 a.m. Minyan 11 a.m. Mah Jongg 12:30 p.m. Mah Jongg 7 p.m. Al Anon & Alateen  <b>20 shevat</b>	19 <b>No Torah Study No Religious School</b> 8 a.m. Express Minyan  <b>21 shevat</b>	20 <b>No Torah Study</b> 8 a.m. Minyan  <b>22 shevat</b>	21 8 a.m. Minyan 7 p.m. Shabbat Evening Services  *5:13 p.m. <b>23 shevat</b>	22 9:30 a.m. Shabbat Morning Services  <i>Mishpatim</i> <b>Shabbat Shekalim</b> 24 shevat
23 9 a.m. Minyan 9 a.m. Religious School 10:30 a.m. Mazel Tots 9:30 a.m. JWV Brunch 4:30 Sunday Meals Program  <b>25 shevat</b>	24 8 a.m. Minyan  <b>26 shevat</b>	25 8 a.m. Minyan 11 a.m. Mah Jongg 12:30 p.m. Mah Jongg 7 p.m. Al Anon & Alateen 7 p.m. Book Club  <b>27 shevat</b>	26 8 a.m. Express Minyan 10:30 a.m. Torah Study w/ Rabbi Nelly, Zoom 4 p.m. Religious School  <b>28 shevat</b>	27 8 a.m. Minyan 6 p.m. Torah Study  <b>29 shevat</b>	28 8 a.m. Minyan 7 p.m. Shabbat Evening Services  *5:22 p.m. <b>Rosh Chodesh</b> 30 shevat	





# march 2025

## adar/nisan

sunday	monday	tuesday	wednesday	thursday	friday	saturday
					*Candle Lighting Times for Middletown, CT	1 9:30 a.m. Shabbat Morning Services  <b>Shabbat Shekalim Rosh Chodesh</b> <i>Terumah</i> <b>1 adar</b>
2 9 a.m. Minyan 9 a.m. Religious School 10:30 a.m. Mazel Tots  <b>2 adar</b>	3 <b>April Kolot Articles Due</b> 8 a.m. Minyan Breakfast Bunch following services  <b>3 adar</b>	4 8 a.m. Minyan 11 a.m. Mah Jongg 12:30 p.m. Mah Jongg 7 p.m. Al Anon & Alateen  <b>4 adar</b>	5 7 a.m. Early Risers Minyan 10:30 a.m. Torah Study w/ Rabbi Nelly, Zoom 4 p.m. Religious School  <b>5 adar</b>	6 8 a.m. Minyan 6 p.m. Torah Study w/ Rabbi Nelly, Zoom  <b>6 adar</b>	7 <b>Adult Megillah RSVP Deadline</b> 8 a.m. Minyan 7 p.m. Shabbat Evening Services  * 5:30 p.m. <b>7 adar</b>	8 9:30 a.m. Shabbat L'chol Adat Morning Services 11:30 a.m. Tot Shabbat  <b>Shabbat Zachor</b> <i>Tetzaveh</i> <b>8 adar</b>
9 <b>Clocks change</b> 9 a.m. Minyan 9 a.m. Religious School 10:30 a.m. Mazel Tots  <b>9 adar</b>	10 8 a.m. Minyan  <b>10 adar</b>	11 8 a.m. Minyan 11 a.m. Mah Jongg 12:30 p.m. Mah Jongg 7 p.m. Al Anon & Alateen  <b>11 adar</b>	12 8 a.m. Express Minyan 10:30 a.m. Torah Study w/ Rabbi Nelly, Zoom 4 p.m. Religious School  <b>12 adar</b>	13 8 a.m. Minyan 6 p.m. Torah Study w/ Rabbi Nelly, Zoom 7:30 p.m. Adult Megillah Reading  <b>Fast of Esther Erev Purim</b> <b>13 adar</b>	14 <b>Pray-Eat-Sing RSVP Deadline</b> 8 a.m. Minyan 7 p.m. Shabbat Evening Services  *6:38 p.m. <b>Purim</b> <b>14 adar</b>	15 9:30 a.m. Shabbat Morning Services  <b>Sushan Purim</b> <i>Ki Tisa</i> <b>15 adar</b>
16 9 a.m. Minyan 9 a.m. Family Megillah Reading Purim Carnival follows  <b>16 adar</b>	17 8 a.m. Minyan 7 p.m. Board of Directors Mtg  <b>17 adar</b>	18 8 a.m. Minyan 11 a.m. Mah Jongg 12:30 p.m. Mah Jongg 7 p.m. Al Anon & Alateen  <b>18 adar</b>	19 8 a.m. Express Minyan 10:30 a.m. Torah Study w/ Rabbi Nelly, Zoom 4 p.m. Religious School  <b>19 adar</b>	20 8 a.m. Minyan 6 p.m. Torah Study w/ Rabbi Nelly, Zoom  <b>20 adar</b>	21 8 a.m. Minyan 6 p.m. Pray-Eat-Sing Shabbat Evening Services & Dinner  *6:46 p.m. <b>21 adar</b>	22 9:30 a.m. Shabbat Morning Services  <b>Shabbat Parah</b> <i>Vayachel</i> <b>22 adar</b>
23 9 a.m. Minyan 9 a.m. Religious School 10:30 am Mazel Tots  <b>23 adar</b>	24 8 a.m. Minyan  <b>24 adar</b>	25 8 a.m. Minyan 11 a.m. Mah Jongg 12:30 p.m. Mah Jongg 7 p.m. Al Anon & Alateen  <b>25 adar</b>	26 8 a.m. Express Minyan 10:30 a.m. Torah Study w/ Rabbi Nelly, Zoom 4 p.m. Religious School  <b>26 adar</b>	27 8 a.m. Minyan 6 p.m. Torah Study w/ Rabbi Nelly, Zoom  <b>27 adar</b>	28 8 a.m. Minyan 7 p.m. Shabbat Evening Services  *6:53 p.m. <b>28 adar</b>	29 9:30 am Shabbat Morning Services  <b>Shabbat Hachodesh</b> <i>Pekudei</i> <b>29 adar</b>
30 9 a.m. Minyan 9 a.m. Religious School 10:30 am Mazel Tots  <b>Rosh Chodesh</b> <b>1 nisan</b>	31 8 a.m. Minyan  <b>2 nisan</b>					

## ADATH ISRAEL SCHOLARSHIP FUND

### RULES AND REGULATIONS GOVERNING ALL POST SECONDARY SCHOOL SCHOLARSHIPS FOR CHILDREN OF CONGREGATION ADATH ISRAEL MEMBERS

The following considerations will guide the Committee in the selection of recipients:

**1. Scholastic achievement**

- a. submission of High School or College transcript **and**
- b. a **current** letter of recommendation from a school administrator, advisor, councilor, etc.

**2. Character** – submission of a **current** letter of reference from an acquaintance or employer other than a member of your family or this committee (not education-related).

**3. Extra-curricular activities** – list on application form your activities and specific involvement beyond just being a member, both in the general and Jewish community, at home and at school.

**4. Essay** discussing your intended course of study (major) and how you plan to apply it to your future endeavors.

5. Applicant must be accepted and attend an accredited college, university, or school of higher learning.

6. Parents must be a member in good standing of Congregation Adath Israel for a minimum of three consecutive years, prior to the date of application.

7. Scholarship applications **must** be accompanied by the first page of the **student applicant's** Federal Income Tax form, if one was filed. **No tax information from the parent(s)/guardian(s) is requested.**

8. Completed applications should be postmarked or delivered to Congregation Adath Israel by May 9, 2025.

9. Mail to:

Attention: Adath Israel Scholarship Committee Chair  
 Congregation Adath Israel  
 P.O. Box 337  
 Middletown, CT 06457

**Incomplete applications will not be considered.**

Adath Israel Scholarship Committee: Fred Zierler,  
 Marc Glass, Michelle Grossman, Myra Finkelstein, Risa Zierler





## ADATH ISRAEL SCHOLARSHIP FUND

(SOPHIE & JULIUS BARKER, EVELYN & ABRAHAM GROSSMAN, SARAH ZIETZ PIERSON, RABBI ALBERT & ROSALYN TROY, SYLVIA GROSS WASSERMAN, MAX CHEIKIN, AND BERNIE & JEAN STERN ARON SCHOLARSHIPS)

### APPLICATION FORM

STUDENT NAME \_\_\_\_\_

ADDRESS \_\_\_\_\_ PHONE/PREFERRED # \_\_\_\_\_

DATE OF BIRTH \_\_\_\_\_ EMAIL: \_\_\_\_\_

PARENT(S)/GUARDIAN(S) NAME(S) \_\_\_\_\_

\_\_\_\_\_

OTHER DEPENDENT CHILDREN IN FAMILY. PROVIDE NAME(S) AND AGE(S).

#1 \_\_\_\_\_ #2 \_\_\_\_\_

#3 \_\_\_\_\_

WHICH COLLEGE /UNIVERSITY/SCHOOL ARE YOU ATTENDING OR HAVE BEEN ACCEPTED TO?

\_\_\_\_\_

WHAT IS THE ESTIMATED COST OF ONE YEAR AT YOUR SCHOOL (ROOM, BOARD, TUITION, MATERIALS)?  
PLEASE DO NOT INCLUDE TRANSPORTATION.

\_\_\_\_\_

STATE SPECIFICALLY HOW YOU PLAN TO MEET THIS COST. STATE ALL SOURCES AND AMOUNTS. INCLUDE  
YOUR PERSONAL MONIES AND SOURCES. CONTINUE ON ADDITIONAL PAGE(S) IF NECESSARY.

\_\_\_\_\_

\_\_\_\_\_

\_\_\_\_\_

\_\_\_\_\_

\_\_\_\_\_

LIST ANY UNUSUAL EXPENSES YOUR FAMILY HAS THAT MIGHT IMPACT THE AMOUNT OF MONEY AVAILABLE FOR YOUR EDUCATION (e.g., OTHER CHILDREN IN COLLEGE, SUPPORT PAYMENTS, MEDICAL EXPENSES). CONTINUE ON ADDITIONAL PAGE(S) IF NECESSARY.

---

---

WHAT WILL BE YOUR PERSONAL FINANCIAL CONTRIBUTION TOWARD YOUR EDUCATIONAL EXPENSES FOR THE COMING YEAR?

---

PROVIDE NAMES OF SCHOLARSHIP(S) YOU HAVE BEEN AWARDED AND THE AMOUNT(S). INCLUDE THOSE FOR WHICH YOU HAVE APPLIED AND ARE AWAITING A DECISION. CONTINUE ON ADDITIONAL PAGE(S) IF NECESSARY.

A. \_\_\_\_\_ B. \_\_\_\_\_

C. \_\_\_\_\_ D. \_\_\_\_\_

TOTAL AMOUNT OF MONEY AVAILABLE FOR COLLEGE/ UNIVERSITY/SCHOOL FOR THE COMING YEAR FROM ALL SOURCES ABOVE.

---

EXTRA-CURRICULAR ACTIVITIES DURING THE PAST 12 MONTHS. LIST EACH AND EXPLAIN YOUR INVOLVEMENT BEYOND JUST BEING A MEMBER. TIME FRAMES OF INVOLVEMENT ARE ENCOURAGED. CONTINUE ON ADDITIONAL PAGE(S) IF NECESSARY.

SCHOOL COMMUNITY \_\_\_\_\_

JEWISH COMMUNITY \_\_\_\_\_

HOME COMMUNITY \_\_\_\_\_

OTHER VOLUNTARY ACTIVITIES \_\_\_\_\_

COMPOSE AND SUBMIT AN ESSAY OF NOT MORE THAN 500 WORDS CONCERNING YOUR EDUCATIONAL GOALS. WHAT MOTIVATED YOU TO SELECT YOUR COURSE OF STUDY AND HOW DO YOU PLAN TO USE IT UPON COMPLETION OF YOUR SCHOOLING?



## Thumim Scholarship Funded by Mark and Luanne Paley An Investment in our Jewish Future

The Thumim Scholarship is pleased to announce camp scholarships are available again this year to Adath Israel families whose children will attend Jewish camp or travel to Israel. Multiple studies show the Jewish camp experience provides long term positive effects on Jewish identity and other life choices. During their lifetime, the Thumims, longtime members of Adath Israel, provided funds for these camp scholarships. Since their deaths, the camp scholarships have relied on individual donations, largely raised in honor of our Volunteer(s) of the Year. Last year and going forward into the future, Mark and Luanne Paley have committed to help fund these scholarships with a significant donation. Individual donors are still needed to maximize the number of families this scholarship can assist. Please consider donating to the Thumim Scholarship throughout the year whenever you send a card, observe a yahrtzeit, celebrate a life cycle event or to honor the Volunteer(s) this year in the fall.

### THE THUMIM SCHOLARSHIP FUNDED BY MARK AND LUANNE PALEY APPLICATION

Please note: only members current in their obligations to the synagogue are eligible to receive scholarship.

To be considered for a scholarship, please complete the application below and return it to the Synagogue office by April 30, 2025. Awards are based on the number of applications and funds available. Camps/Israel financial statements are required with this application to process the request.

CHILD'S NAME: \_\_\_\_\_

PARENT'S NAME: \_\_\_\_\_

ADDRESS: \_\_\_\_\_

\_\_\_\_\_

PHONE #: \_\_\_\_\_

EMAIL: \_\_\_\_\_

NAME OF CAMP: \_\_\_\_\_

ADDRESS: \_\_\_\_\_

\_\_\_\_\_

DATES OF ATTENDANCE: \_\_\_\_\_

COST OF CAMP: \_\_\_\_\_

AMOUNT OF CAMP NOT COVERED BY OTHER STIPENDS: \_\_\_\_\_

PLEASE ATTACH COPY OF BILLING STATEMENT.

REMINDER!! SUBMIT THIS APPLICATION TO THE OFFICE BY APRIL 30, 2024.

EIGHTEENTH ANNUAL  
**Ring Family Wesleyan University**  
**Israeli Film Festival**  
 SPRING 2025

**TATAMI**

A special screening of *Tatami* followed by a Q&A with co-director Guy Nattiv  
 January 29, 2025, 8:00 PM

**THE MILKY WAY**

New England Premiere  
 February 5, 2025, 8:00 PM

**OF DOGS AND MEN**

New England Premiere – Film screening followed by a Q/A with the director of the film.  
 February 12, 2025, 8:00 PM

**LEGENDS OF DESTRUCTION**

Film screening followed by a Q/A with the illustrator of the film.  
 February 19, 2025, 8:00 PM

**RUNNING ON SAND**

Connecticut Premiere  
 February 26, 2025, 8:00 PM

**PINK LADY**

New England Premiere – Film screening followed by a Q/A with one of the film producers.  
 March 5, 2025, 8:00 PM

**The Goldsmith Family Cinema in the Jeanine Basinger Center for Film Studies**  
 301 Washington Terrace, Middletown, Connecticut

Free Admission, Free On-Site Parking, Open to the Public

More information: [iff.site.wesleyan.edu](http://iff.site.wesleyan.edu)

Sponsored by the Center for Jewish Studies and the Ring Family.  
 Organized by Dalit Katz, Director

Co-Sponsored by the College of Film and the Moving Image, The Wesleyan Film Series



**Center for Jewish Studies**



**Wesleyan University**





*Celebrate Jewish Life*

P.O. Box 337

Middletown, CT 06457

**Dr. Arthur and Gladys Weiss Scholarship Application**

Dr. Arthur Weiss, a Past President of Temple B’nai Abraham, and his wife Gladys were long-time, extremely active, and dedicated members of Temple B’nai Abraham. They established this scholarship to encourage Jewish youth to participate in Jewish activities such as camps, Jewish content special programs, and trips to Israel. Individuals may contribute to this fund to help perpetuate the memory and interest of the Weiss’s.

Open to Jewish children elementary school age through high school whose parent(s)/guardian(s) are members in good standing of Adath Israel, this scholarship award is based on applicant’s involvement in Congregation activities, the Jewish nature/content of the program, and financial need.

**Complete and return to Adath Israel by April 30, 2025**

Name: \_\_\_\_\_

Address: \_\_\_\_\_

\_\_\_\_\_

Phone Number: \_\_\_\_\_ Email: \_\_\_\_\_

Age: \_\_\_\_\_ Grade: \_\_\_\_\_

Number of years your parent(s)/guardian(s) have been members of Temple B’nai Abraham/Adath Israel \_\_\_\_\_

Please respond to the following:

A. Identify the program for which you are requesting a scholarship. Explain the Jewish content of the program (printed literature and/or a website link is required).

\_\_\_\_\_  
\_\_\_\_\_

B. Why did you choose this program, and what do you hope to gain from attending it (both Jewish and otherwise)?

\_\_\_\_\_  
\_\_\_\_\_



**Dr. Arthur and Gladys Weiss Scholarship Application (cont.)**

C. What is the length and total cost of the program? (Do not include transportation, clothing, personal items, etc.)

---

D. If you are 16 years or older, please answer: How much of the total cost are you planning to contribute? How are you going to earn it?

---

E. Tell us about your involvement in recent Congregation activities and when the activities took place. College students: please specify your Congregation activities and Jewish activities you are engaged in while in college.

---

---

---

F. Discuss any additional thoughts you have as to why you should be awarded a Weiss Scholarship.

---

---

---

\_\_\_\_\_  
Signature

\_\_\_\_\_  
Date



# Caring Conversations

## About End of Life

### Lunch & Learn Discussion

**February 10, 12:30pm-1:45pm | The Emanuel Synagogue**

Co-sponsored by Jewish Family Services and the Jewish Community Foundation

**Join Rabbi Melanie Levav, Executive Director of Shomer Collective**, to explore the value that end-of-life planning can bring to you and your loved ones. Through a person-centered approach, Melanie will:

- Help individuals and families identify and express their values, goals, and wishes around healthcare decision-making
- Explore these issues in light of Jewish wisdom and practice
- Answer your pressing questions

The program is free and open to the public and will include lunch and educational materials. Shomer Collective is a nonprofit organization dedicated to improving end-of-life experiences for individuals and their families — inspired by Jewish wisdom, values, and practices.



#### ABOUT THE SPEAKER

**Rabbi Melanie Levav, BCC, LMSW:** Melanie is a second career rabbi who pivoted her career to focus on end-of-life care and conversations, bringing more than two decades of non-profit management, social work, Jewish education, and fundraising experience to her work. Earlier in her career, Melanie founded a center for end of life care serving the Russian-speaking emigre community, focused on advance care planning for Holocaust survivors and their adult children.

**For questions or to RSVP, please email Maureen O'Connell,  
moconnell@jcfhartford.org**





*Celebrate Jewish Life*  
P.O. Box 337  
Middletown, CT 06457

Contact information

Phone: 860-346-4709

Email: [office@adathisraelct.org](mailto:office@adathisraelct.org)

Website: [www.adathisraelct.org](http://www.adathisraelct.org)